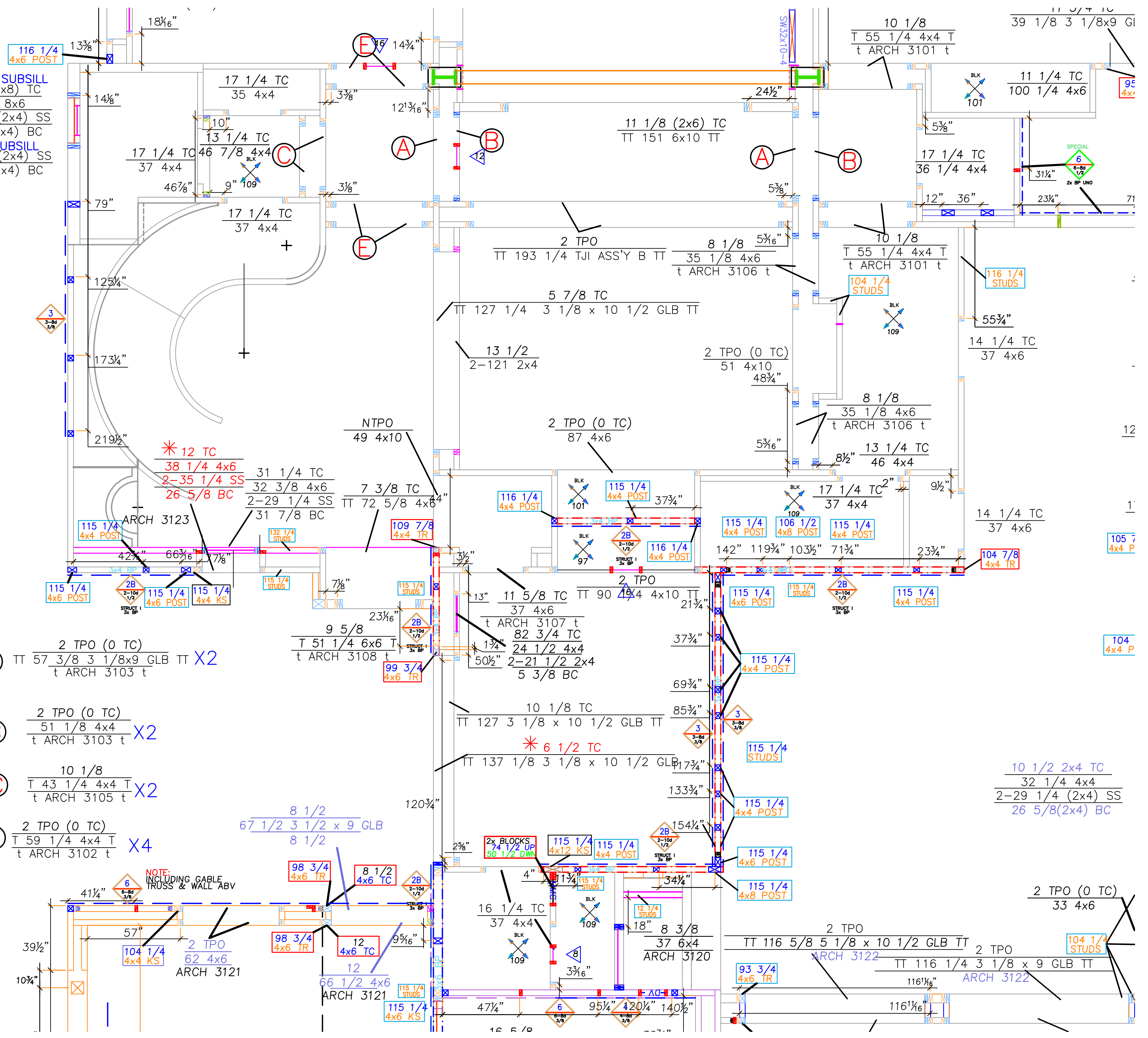


INT HDR & SUBSILL
 10 1/2 (2x8) TC
 30 3/4 8x6
 2-27 5/8 (2x4) SS
 51 1/8 (2x4) BC
 OUTSIDE SUBSILL
 2-27 5/8 (2x4) SS
 45 3/8 (2x4) BC



(A) $\frac{2 \text{ TPO (0 TC)}}{\text{TT } 57 \frac{3}{8} \text{ 3 } \frac{1}{8} \times 9 \text{ GLB TT}} \times 2$
 $\frac{\text{t ARCH 3103 t}}$

(B) $\frac{2 \text{ TPO (0 TC)}}{51 \frac{1}{8} \text{ 4x4}} \times 2$
 $\frac{\text{t ARCH 3103 t}}$

(C) $\frac{10 \frac{1}{8}}{\text{T } 43 \frac{1}{4} \text{ 4x4 T}} \times 2$
 $\frac{\text{t ARCH 3105 t}}$

(E) $\frac{2 \text{ TPO (0 TC)}}{\text{T } 59 \frac{1}{4} \text{ 4x4 T}} \times 4$
 $\frac{\text{t ARCH 3102 t}}$

NOTE:
 INCLUDING CABLE
 TRUSS & WALL ABV

$\frac{10 \frac{1}{2} \text{ 2x4 TC}}{32 \frac{1}{4} \text{ 4x4}}$
 2-29 1/4 (2x4) SS
 26 5/8 (2x4) BC

$\frac{2 \text{ TPO (0 TC)}}{33 \text{ 4x6}}$

95
 4x4

105
 7
 4x4 P

104
 4x4 P

104
 1/4
 STUDS